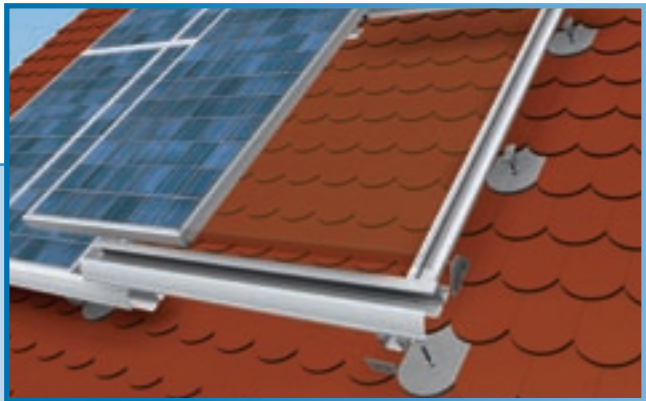


# SOL-50 ON-ROOF SYSTEM FOR PLAIN TILE ROOFS CLADDING AND SLATE ROOFS

Intelligent frame solutions for real roof classics

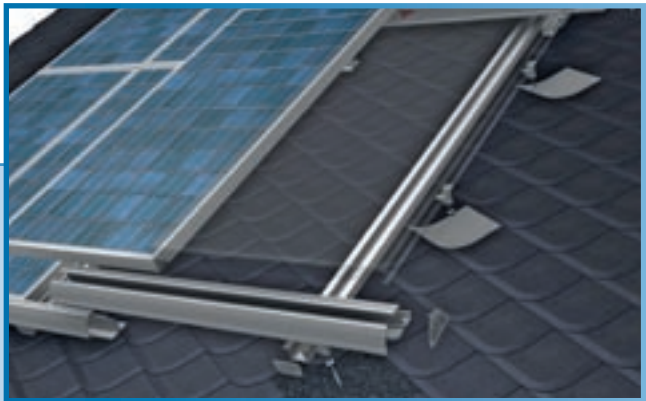


## Technical data for plain roof cladding

- Suitable for:** Plain roof cladding
- Roof pitch:** From 30°
- Static:** Takes into account all snow loads and wind pressure zones  
Building height limited to max. 18.00 m  
Material requirement depends on location
- PV modules:** Framed modules up to 50 mm frame height
- Module positioning:** Horizontal and vertical
- Height adjustment:** Up to 20 mm possible
- Materials:** Extruded aluminium frames (EN AW 6060/6063)  
Galvanized metal plate; Rust-proof steel screws
- Colour:** Press finished, anodized and in all RAL colours

## Technical data for slate roof










- Suitable for:** Roofing with natural and artificial slate
- Roof pitch:** From 25°
- Static:** Takes into account all snow loads and wind pressure zones  
Building height limited to max. 18.00 m  
Material requirement depends on location
- PV modules:** Framed modules up to 50 mm frame height
- Module positioning:** Horizontal and vertical
- Height adjustment:** Up to 20 mm possible
- Materials:** Extruded aluminium frames (EN AW 6060/6063)  
Replacement slate plates made of aluminium; Rust-proof steel screws
- Colour:** Press finished, anodized and in all RAL colours



## Components

-  Solar fastening with gasket
-  Horizontal frame end cap
-  Vertical top part
-  Vertical frame end cap
-  Vertical frame with jointer
-  Cover trim
-  Horizontal frame
-  Self-tapping screw
-  Galvanized plate tile

## Components

-  Solar fastening with gasket
-  Aluminium dummy plate
-  Horizontal frame end cap
-  Vertical top part
-  Vertical frame end cap
-  Vertical frame with jointer
-  Cover trim
-  Horizontal frame
-  Self-tapping screw